



Pearl spa

PEARL SPA TREATMENT MENU

POWERED BY **ELEMIS**

4 WELCOME TO PEARL SPA
6 PEARL SIGNATURE SPA CEREMONIES
7 PEARL SIGNATURE SPA TREATMENTS & SPA DAY PACKAGES
8 ELEMIS MASSAGE & ELEMIS Pregnancy
10 ELEMIS MASSAGE
12 ELEMIS BODY THERAPY
14 ELEMIS EXPERT TOUCH FACIALS
16 ELEMIS EXPERT TECH FACIALS
18 SPA ESSENTIALS- HANDS & FEET
20 PEARL SPA ETIQUETTE



WELCOME TO PEARL SPA

Escape from the pressures of everyday life and transport yourself to the tranquil surroundings of the Pearl Spa where time is left at the door.

Pearl Spa Elite therapists make it personal. They look. They listen. They tune in to you, performing transformative treatments, personalised to respond to the ever evolving rhythm of your life and the ever-changing nature of your skin.

Discover the ELEMIS Experience with treatments designed to respect the body's complex physiology. Revolutionary Spa therapies that work in natural synergy with the skin, body and mind. Every treatment is specifically designed to offer a unique experience, using powerful massage sequences and the most potent actives available in the world today.

With ELEMIS, every ground breaking formula is an innovative blend of science with the chemistry of nature, carefully crafted by a dedicated team of explorers, scientists and skin-care experts. Encompassing the most powerful biological actives available from both 'above and below' the earth's surface, ELEMIS' meticulous attention to detail, pioneering formulas and remarkably transformative results are what truly sets our skincare apart

PEARL SIGNATURE SPA CEREMONIES

AQUA THERMAL JOURNEY

Allow yourself to be guided through a sequence of different heat and water experiences, letting your body and mind discover new sensations and the true benefits of relaxation and rejuvenation. We recommend that you follow this journey prior to any spa therapy to optimise results.

SANARIUM

A sanctuary of low heat and humidity helps to slowly warm the body to initiate the detoxifying process.

THALASSO POOLS

Seawater pool with high density content allows the body to float freely thus inducing deep relaxation. The effect of seawater simultaneously regenerates the circulation and remineralises to maximise bodily function and relieves ailments of muscular & joint pain.

INVIGORATING SHOWERS

A sequence of cooling showers with different jets & spray leaves the body feeling refreshed and rejuvenated between heat rooms.

STEAM BATH

Encapsulated with high levels of humidity, an infusion of aroma essences aid the respiratory system and assist further elimination of toxins, whilst softening the skin.

SNOW CHAMBER

A snow filled cocoon provides a contrast of icy temperatures to cool the body. The effect on the circulation induces anti-inflammatory & regenerative properties, leaving the body feeling toned and refreshed.

SAUNA

A classic Finnish sauna heated by olivine stones provides a dry rustic warming sensation to deeply heat the body, inducing relaxation and softening the muscles.

RELAXATION ROOM

To complete the Aqua Thermal Journey, recline in cosy loungers letting time slip away, discovering peace and a new found equilibrium.

75 minutes €25



SPA PACKAGES
PEARL SIGNATURE TREATMENT

SPA PACKAGES

This range of expertly curated ELEMIS packages is designed to deliver focused results, relaxation and restoration. Each package speaks to whatever you need, whenever you need it.

De-Stress 2hours 30minutes €200

- Bath
- Aromatherapy Massage
- Expert Tech Facial (50 minutes)

Detox 2hours €180

- Intensely Cleansing Salt Scrub – Lime & Ginger
- Cellutox Deep Tissue Massage
- Target Toning Tightener (choose an area of concern abdomen or arms or legs)

Musclease 2hours 30 minutes €170

- Bath
- Musclease Aroma Ocean Wrap
- Musclease Deep Tissue Massage

Frangipani Lovers 2hours 30minutes €450 (for both)

- Intensely Cleansing Salt Scrub- Frangipani
- Frangipani Relaxing Massage
- Expert Touch Facial (50 minutes)

*Aqua Thermal Journey included in all packages

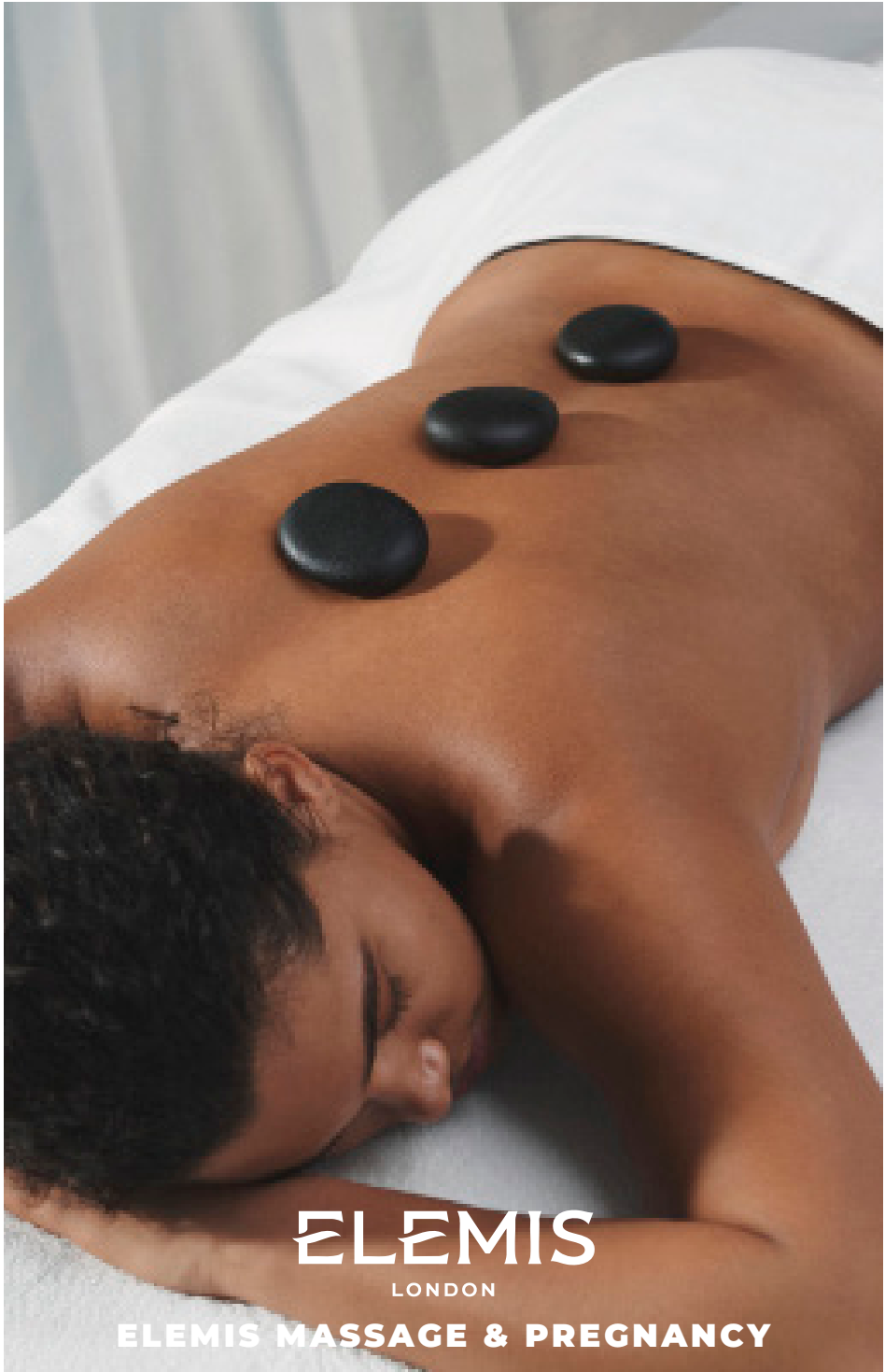
PEARL SIGNATURE TREATMENT

PEARL BOTANICAL RASUL RITUAL

This complete cleansing and detoxifying ritual begins with a gentle exfoliation on the face and body. A hydrating mask is applied to the face along with a deeply nourishing hair milk. The body is coated with different therapeutic oils all over the body, allowing absorption within a soothing steam room. This helps to release stress, detoxify the body and hydrate the skin. The ritual is completed with a relaxing 55min full body massage, sending you into a state of tranquillity.

1 Person 2hours €130

2 People 2hours €220



ELEMIS

LONDON

ELEMIS MASSAGE & PREGNANCY

ELEMIS MASSAGE

ELEMIS Deep Tissue Massage

This is a vigorous workout for the body, perfect to alleviate high stress levels. Tailored entirely to your needs, it leaves you feeling grounded and focused. Your Therapist will select an aromatic oil according to your concerns; Muscle pain, stress relief, pure relaxation or emotional balance. Skin is prepped to release toxins and the flowing massage works deeper and deeper into the tension, encouraging optimum circulation. As effective as an hour's stretching, but so much more nurturing.

30/60/90 minutes €55/€95/€125

ELEMIS Aromatherapy Massage

This is a lavishly hydrating body massage based on the concept of aromatherapy. The skin is anointed with nourishing oils chosen to uplift your spirit, relax your senses, empower your strength or calm you down whilst a bespoke massage comforts the skin in all its glory. Skin is left exquisitely moisturised, intensely supple and deliciously scented.

60/90 minutes €95/€125

ELEMIS Hot Stone Massage

Nothing gets into the centre of the muscle like a hot stone. Bathed in the intensely moisturising Frangipani Monoi Body Oil, a curated range of Balinese stones are selected to address exactly what you need. They are worked over the body, deep into the muscles, getting into areas of tension at a profound level, persuading the muscles to release their trapped energy. The result is sparkling vitality with the added bonus of intensely hydrated skin.

60/90 minutes €95/€125

ELEMIS Frangipani Head & Scalp Massage

This scalp Massage is so blissful it should be illegal. Tension is dissolved using a combination of the ancient Chinese healing massage Tui Na and Japanese Shiatsu, while Indian and Thai kneading invigorates and clears your head.

60 minutes €95

ELEMIS PREGNANCY

ELEMIS Peaceful Pregnancy Massage

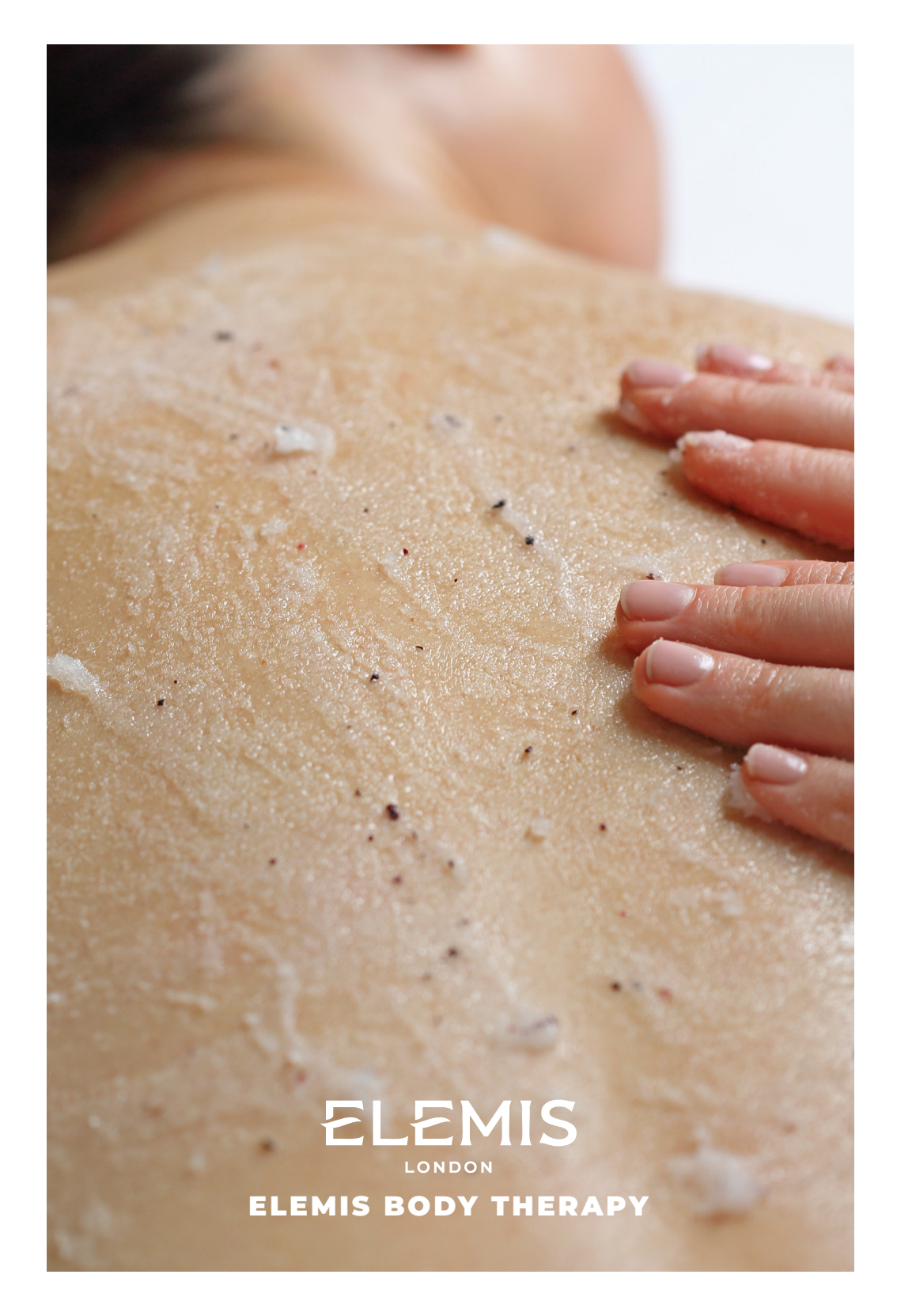
This unique pregnancy massage is a profoundly nurturing and tranquil oasis. An intuitive, sensitive and relaxing massage hydrates and moisturises skin that is expanding to accommodate a growing baby. Only nurturing aromatics are imparted along with wisdom, empathy and respect.

60 minutes €95

ELEMIS Peaceful Pregnancy Face & Body Experience

Tried and tested safe massage techniques are combined and adapted to each stage of pregnancy. Helps to relieve tension in the lower and upper back, as well as alleviate swelling of the hands and feet, while easing the mind and uplifting the spirit.

2 hours €155



ELEMIS

LONDON

ELEMIS BODY THERAPY

ELEMIS BODY THERAPY

ELEMIS Intensely Cleansing Salt Scrub (Lime and Ginger or Frangipani)

The extraordinary cleansing power of salt goes to work releasing toxins in this body polishing treatment. The fragranced salt of your choice will gently slough away dead skin cells, encouraging the regeneration of new cells and perfectly prepping the skin.

It leaves a smooth and responsive canvas, ready to absorb the deeply nourishing body oil.

Delivers velvety soft, invigorated skin.

40 minutes €75

ELEMIS Cellutox Aroma Spa Ocean Wrap

This seaweed treatment detoxifies and deep cleanses the body inside and out, combining the richest of sea plants and marine algae with aroma-therapeutic actives.

Excellent for improving the dimpled appearance of cellulite and reducing fluid retention. A warm seaweed body mask combined with a detoxifying blend of Juniper and Lemon essential oils is applied to the body, before you are cocooned in a comforting foil wrap, whilst being treated to a deep Thai drainage facial massage and de-stress scalp treatment.

75 minutes €95

ELEMIS Musclease Aroma Spa Ocean Wrap

A powerful seaweed wrap for complete muscle relaxation. Drift away whilst you are cocooned in a comforting foil wrap and treated to a pressure point facial massage and de-stress scalp treatment. Using a warming blend of essential oils, this specialised treatment helps ease aching, tense muscles.

75 minutes €95

ELEMIS Targeted Toning & Slimming Treatment

Tightening and toning are the pillars of this treatment. A powerful blend of salts, minerals and seaweeds work together to target cellulite and poor skin tone on hips, thighs, abdomen and backs of arms. Nigari salt deeply cleanses, followed by a targeted sculpting massage to kick-start the micro-circulation, promoting a smoother silhouette and invigorating the entire body. A cooling rubberised mask, rich in super-detoxing caffeine and green clay is applied to problem areas, whilst clinically proven Red Algae redefines areas prone to sagging. The result is a targeted body airbrush and skin that looks and feels intensely toned and refreshed.

(You can choose a localised treatment: Arms, Hips & Thighs, or Abdomen)

30/90minutes €55/€110

Energizing Milk Bath 30 minutes €25



ELEMIS

LONDON

EXPERT TOUCH HANDS-ON FACIALS

EXPERT TOUCH HANDS-ON FACIALS

NOURISH FACIAL

Boost skin radiance with our triple cleanse facial infused with a blend of antioxidant-rich-facial oils, leaving your skin feeling nourished, rebalanced and revived.

50 minutes €110

REVEAL FACIAL

Powered by our patented Tri-Enzyme technology this facial helps to minimise the look of pores and uneven skin texture, revealing skin that looks visibly resurfaced, smoothed and glowing

50 minutes €110

RENEW FACIAL

Improve skin firmness, whilst reducing the look of fine lines and wrinkles without clinically proven formulas and skin-lifting massage techniques. After just one treatment the complexion looks supremely hydrated, lifted and firm.

50 minutes €110

DEFINE FACIAL

This innovative facial captures the power of clinically proven intelligent skincare to deliver transformative results for energised, rejuvenated and sculpted looking skin.

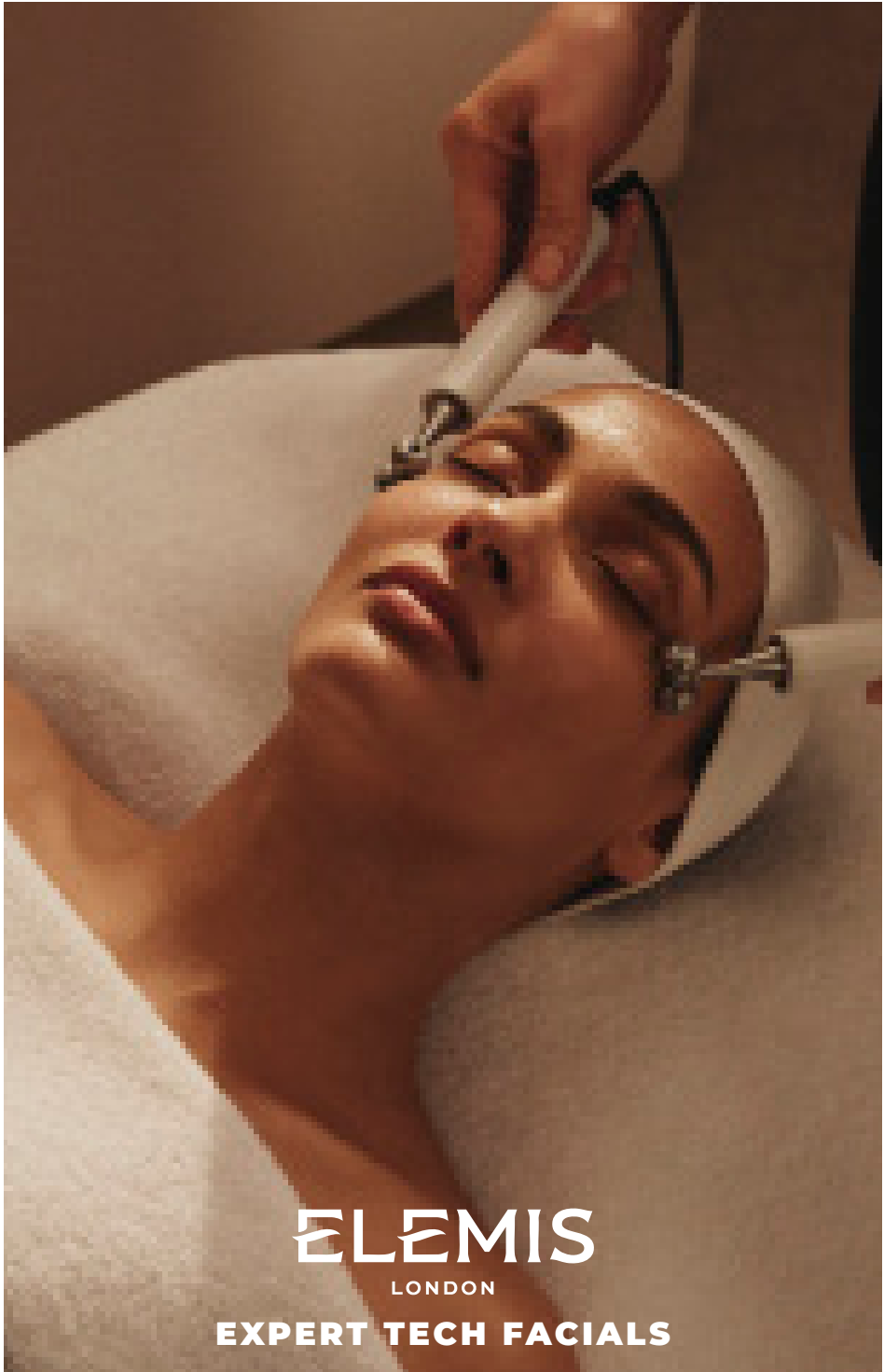
50/80 minutes €110/140

ELEMIS EXPERT ADD-ON

ELEMIS EXPERT™ COLLAGEN EYE BOOST

Elevate your facial experience with our targeted eye treatment add on, specially designed to brighten, hydrate, and revitalise.

15 minutes €15



ELEMIS

LONDON

EXPERT TECH FACIALS

EXPERT TECH FACIALS

RADIANCE + REVIVE FACIAL

Revive tired skin with our advanced Ultrasonic Peel Technology teamed with Oxygen Infusion to plump and Galvanic to nourish leaving your skin rebalanced, nourished and radiant.

50 minutes €130

SMOOTH + POLISH FACIAL

Reset uneven skin tone and texture with our Ultrasonic Peel to refine, Led Light to re-energise and Galvanic to nourish, revealing bright, polished and smooth skin.

50 minutes €120

LIFT + REJUVENATE FACIAL

Restore your skin's vitality our targeted Microcurrent technology for the ultimate lift, Ultrasonic Peel to gently exfoliate and Oxygen infusion to plump. Skin will appear renewed, toned and firmer.

50 minutes €120

SCULPT + FIRM FACIAL

Our ultimate treatment, this multi-faceted facial is customised to target your skin needs using all 5 BIOTEC technologies for a transformative facial experience like no other, leaving skin revitalised, strengthened and defined.

50/80 minutes €120/160



ELEMIS

LONDON

SPA ESSENTIALS- HANDS & FEET

SPA ESSENTIALS- HANDS & FEET

Don't forget to add your final touches to your day at the Spa. Let our qualified and professional team take care of your essential needs so that you look and feel your absolute best.

ELEMIS Garden of England Rose Restore Hand Treatment

Hand massages are alarmingly relaxing. And this is the last word in conditioning, restorative, anti-ageing hand treatments. Targeting age spots and dryness, you'll waft out with the softest little paws and a blissed out smile on your face. Including cuticle and nail procedure.

55 minutes €40

Plus Shellac Polish €15

Express manicure for men 30 minutes €30

ELEMIS Best Foot Forward

Take a load off with this foot focused tension releaser. Lower legs and feet are thoroughly exfoliated, bathed and massaged. This treatment softens and smoothes the skin to leave feet as supple and fragrant as a Rose. Including cuticle and nail procedure.

75 minutes €50

Plus Shellac Polish €15

Express Pedicure for men 45 minutes €40



PEARL SPA ETIQUETTE

PEARL SPA ETIQUETTE

General

- The Spa and its environs are strictly NO SMOKING areas.
- We do not allow mobile phones in the Spa areas, please leave them switched off in your locker. This is the time for your body and mind to release the worries and stresses of the day.
- Please conduct all conversations at levels consistent with a relaxing Spa environment.
- The Spa & its facilities are open to persons aged 16 and over.
- Shower towels can be found in your lockers, please do not take shower towels outside.
- Please leave all items of value in your locker. The Spa is not responsible for loss of or damage to a guest's personal belongings.
- Always shower before using pool facilities and between sauna and steam rooms. A robe & slippers should be worn in all spa areas.
- Swimwear is compulsory in Steam, Sauna and pool areas.
- A towel should always be placed on sauna and steam room benches between you and the bench.
- Please do not leave toiletries in showers or wet vanity areas.
- Shaving is permitted in the male changing rooms. However, please ensure that wet vanity areas are left clean. Razors should not be placed in any of the waste bins and shaving is strictly prohibited in the saunas and steam rooms.
- Please do NOT add oils or other products to the sauna bucket water without first speaking to a member of staff.
- Please ensure that you drink plenty of fluids to rehydrate after use of the sauna and steam rooms.
- Please place all used towels in the baskets provided.
- Food & drink should not be brought into the Spa for consumption during your visit. Refreshments are available in the relaxation areas and the Hotel Restaurant.
- All guests will be required to complete and sign a health & lifestyle questionnaire upon arrival prior to entrance to the spa facilities.
- If you have a gift voucher please remember to bring this with you on the day to hand to Reception
- All facilities are subject to availability.

PEARL SPA ETIQUETTE

For the comfort, safety and relaxation of all our guests we ask that the following guidelines are followed at all times:

When Taking a Treatment

- Please arrive in good time to enjoy the facilities and ensure that you are ready to be collected by your therapist at the allotted time. Time lost through late arrival will result in a shortened or amended treatment being offered without refund.
- Underwear or suitable swimwear should be worn in the treatment room and during treatments. For some treatments you will be provided with disposable undergarments by your therapist, and suitable towel draping will be used at all times.
- During treatments, please let your therapist know if you are comfortable or uncomfortable, too warm or too cold, or if their pressure is too light or too firm. Your comfort and care is our greatest concern and priority.
- If you have a particular injury or physical condition, please explain it to the therapist. They can suggest appropriate adjustments to the treatment for your comfort and enhancement.
- There is no pressure to talk during a treatment. It is entirely up to you. If you have any questions or would like to talk, certainly do so. The therapist will take their cues from you. If you are quiet they will be too.
- We hope you enjoy this interlude of pampering and relaxation.
- Your comments are always welcome.

Spa Tours

- Spa Tours are by appointment only and can be conducted outside of the Spa's operating hours.

Cancellation Policy

- Please note 24 hours, cancellation notice is required for all bookings and services otherwise, 50% of the total treatment price will be charged. Credit card details may be required in order to confirm a booking.

SUNRISE  PEARL
Hotel&Spa

Sunrise Pearl Hotel

P.O. Box 33043, 5310 Paralimni, Cyprus.

Tel. (Hotel): +357 238 31 500, **(Spa):** +357 2320 3040

Fax: +357 238 31 308

Email: spa@sunrisepearl.com

Website: www.sunrisepearl.com